



GIA GEM TRADE LABORATORY

New York Headquarters
580 Fifth Avenue | New York, NY 10036-4794
T: 212-221-5858 | F: 212-575-3095

Carlsbad
5355 Armada Drive | Carlsbad, CA 92008-4699
T: 760-603-4500 | F: 760-603-1814

DIAMOND GRADING REPORT

GIA REPORT 13586343

August 16, 2004

Shape and Cutting Style ROUND BRILLIANT

Measurements 8.05 - 8.09 x 4.95 mm

Weight 2.01 carat

Proportions

Depth 61.3 %

Table 59 %

Girdle THIN TO THICK, FACETED

Culet NONE

Finish

Polish GOOD

Symmetry GOOD

Clarity Grade SI1

Color Grade H

Fluorescence NONE

Comments:

Additional clouds are not shown.

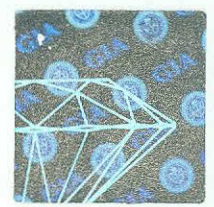
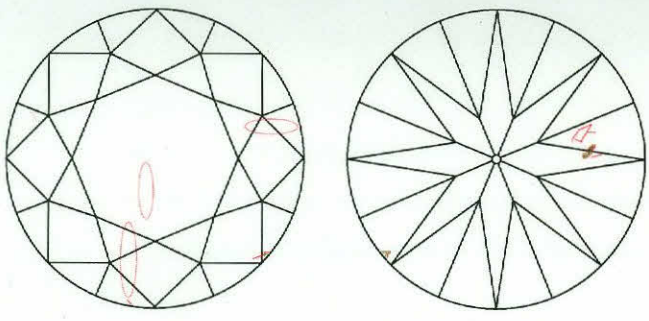
Surface graining is not shown.

Crown angles are greater than 35 degrees.



This Report is not a guarantee, valuation or appraisal. This Report contains only the characteristics of the diamond described herein after it has been graded, tested, examined and analyzed by GIA Gem Trade Laboratory under 10X magnification, and/or has been inscribed, using the techniques and equipment available to GIA Gem Trade Laboratory at the time of the examination and/or at the time of being inscribed, including fully corrected triplet loupe and binocular microscope, master color comparison diamonds, standardized viewing environment and light source, electronic carat balance, synthetic diamond screening device, high intensity short wave fluorescence imaging system, short wave ultraviolet transmission detection system, optical measuring device, micro laser inscribing device, ProportionScope®, ultraviolet lamps, millimeter gauge, and ancillary instruments as necessary. Red symbols denote internal characteristics (inclusions). Green or black symbols denote external characteristics (blemishes). Diagram is an approximate representation of the diamond, and symbols shown indicate type, position, and approximate size of clarity characteristics. All clarity characteristics may not be shown. Details of finish are not shown. The recipient of this Report may wish to consult a credentialed Jeweler or Gemologist about the importance and interrelationship of cut, color, clarity and carat weight.

GIA CLARITY SCALE		GIA COLOR SCALE	
FLAWLESS	VERY VERY SLIGHTLY INCLUDED	COLORLESS	D
INTERNALLY FLAWLESS			E
VVS ₁	VERY SLIGHTLY INCLUDED	NEAR COLORLESS	F
VVS ₂			G
VS ₁	SLIGHTLY INCLUDED	FAINT	H
VS ₂			I
SI ₁	INCLUDED	VERY LIGHT	J
SI ₂			K
I ₁	INCLUDED	LIGHT	L
I ₂			M
I ₃			N
			O
			P
			Q
			R
			S
			T
			U
			V
			W
			X
			Y
			Z



KEY TO SYMBOLS

- Cloud
- ~ Feather
- ▲ Indented Natural

IMPORTANT DOCUMENT, STORE SAFELY

The security features in this document, including the hologram, security screen, microprint lines and chemical sensitivity, in addition to those set forth, exceed document security industry guidelines.

NOTICE: IMPORTANT LIMITATIONS ON BACK

August 16, 2004

GIA Report: 13586343

Shape: Round Brilliant

Meas: 8.05 - 8.09 x 4.95 mm

Weight: 2.01 carat

Depth: 61.3 %

Table: 59 %

Girdle: Thin to Thick, Faceted

Culet: None

Polish: Good

Symmetry: Good

Clarity: SI1

Color: H

Fluorescence: None

Comments: Additional clouds are not shown. Surface graining is not shown. Crown angles are greater than 35 degrees.

Key to Symbols

Cloud, Feather, Indented Natural

GIA
GEM TRADE LABORATORY

