

Having trouble viewing this email? [Click here](#)

The Jewelry Advisor ©

www.ctjewelryappraisers.com

Volume 11 - November 2010



Connecticut
JEWELRY APPRAISERS
"We value your treasures"

860.391.3001

Madison • New Haven • Chester • Kensington



Paul D Indorf

GG, ICGA, ASG, ASA
Master Gemologist Appraiser[®]

Dear Paul,

Thank you for your continued interest in my newsletter. I welcome suggestions for improvements and discussion topics.

I'm back from the Treasure Hunt!

I had a fantastic day at the CPTV Treasure Hunt! It was great to have the opportunity to see such a large volume of interesting antique jewelry.



This beautiful c1910 Edwardian diamond ring was the highlight. The center stone is a 5.10 carat fancy yellow, old European cut diamond. The stone has no visible inclusions under 10x magnification and the color is beautiful. The ring is handmade in platinum with an 18 karat yellow gold bezel holding the diamond. The workmanship and attention to detail is

exquisite. Value? Approximately \$75,000.

There were many other interesting items like a pair of gold plated bangle bracelets with yellow and rose gold details with a platinum dove in the center. The bracelets date to the mid to late 19th century. They are not particularly valuable but interesting none the less.



[Find us on Facebook](#)

Our Services

Insurance Appraisals

Estate Appraisals

Brokerage Services

Equitable Distribution

Donation Reports

Other Services

Downloads

CJA Brochure

Insurance Questions

Helpful Links

Jewelry Info Center

Antique Jewelry University

Antique Jewelry Camp

Roskin Gem Report

Local Business

Professionals

Appraisal appointments

***"while you wait"
are available at all
four locations***

***Chester - Madison
New Haven & Berlin***

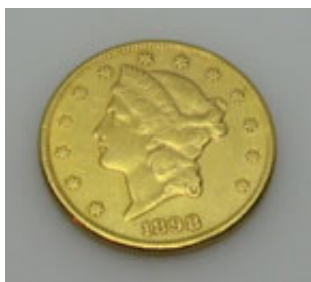


Here is another interesting piece. It is a Victorian c1860 cameo, but do you know what material it is carved from? Most people are familiar with cameos carved from shell, but cameos are carved from many other materials. Usually the material is chosen for cameo carvings because it is naturally layered, like shell or agate, but material like coral and this "mystery material" is also used. Be the first to email me with the correct identification and win

\$25. By the way, the approximate value of this cameo is \$800.

The CPTV Treasure Hunt was a fun day. I learned a lot and saw more antique jewelry than I normally would see in a year!

Do you have jewelry, coins or silver to sell?



If you do, I can help you get the most for your jewelry, gems, watches, silver and coins. I will do a thorough evaluation of your items and make sure things that have more than the scrap value are sold for a fair price.

Call 860-391-3001 to schedule a discreet review of your items.

*call 860-391-3001
or [email](#)
to book an appointment*



*Please visit
Peter Indorf Jewelers E-Store*

Thank you for your interest in my newsletter. Please visit my website at [Connecticut Jewelry Appraisers](#) for more information.

Sincerely,



Paul Indorf
Connecticut Jewelry Appraisers



[Forward email](#)



This email was sent to paul@ctjewelryappraisers.com by paul@ctjewelryappraisers.com | [Update Profile/Email Address](#) | Instant removal with [SafeUnsubscribe™](#) | [Privacy Policy](#).

CT Jewelry Appraisers | PO Box 521 | Chester | CT | 06412